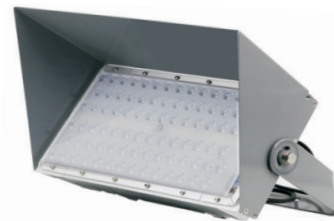


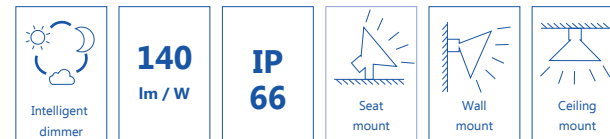
APPLICATIONS

Designed for illuminating basketball courts, badminton courts, natatoriums, tennis courts, football fields, running tracks, workshops, plant areas and other indoor or outdoor locations.

NTC9286 LED FLOODLIGHT

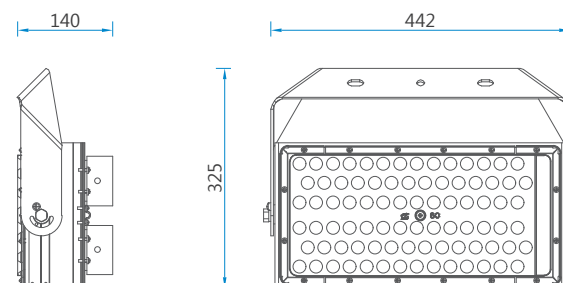


- LED light source providing high luminous efficacy and up to 50% reduction in power consumption
- Designed with multiple types of color temperature for a variety of applications
- Available with four versions including standard version, 0 V- 10 V dimming version, DMX dimming version and DALI dimming version



DIMENSIONAL DRAWINGS

*all dimensions in mm

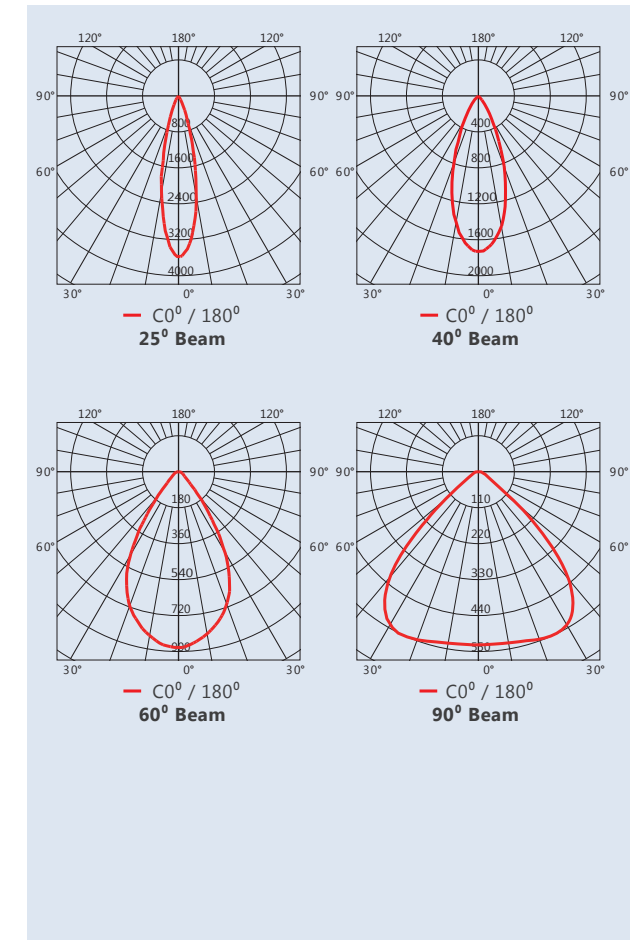


TECHNICAL DATA

Certification	
International approvals	CE, CB, IECEE
Conformity to standards	IEC60598
Material	
Body material	Aluminum alloy
Diffuser	PC
Light source	
Wattage	400 W
Type	LED
Luminous efficacy	140 lm / W
Life	100000 h
Maximum projected area	0.093 M ²
Dimming interface	DC 1 V - 10 V
Rated voltage	198 V - 264 V AC 50 Hz / 60 Hz
Class of insulation	Class I
Cable entry	G3/4
Ambient temperature	-20 °C to +55 °C
Degree of protection	IP 66
Corrosion-proof class	WF2

PHOTOMETRIC DATA

NTC9286 400 W
LED photometric data
Luminous intensity distribution cd / 1000 lm



We can provide lighting design and data by professional lighting software based upon simulated site situation on request.

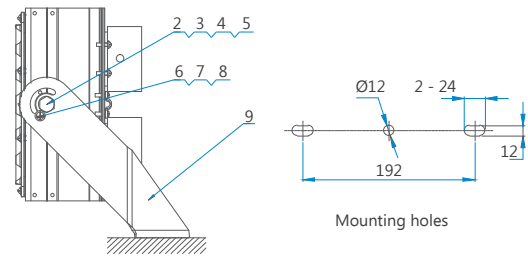
SELECTION TABLE

Model	Lamp power (W)	Lamp type	Operating current (A)	Color temperature (K)	Weight (kg)
NTC9286/400/LED/WW	400	LED	1.85	2700	8.8
NTC9286/400/LED/NW	400	LED	1.85	4000	8.8
NTC9286/400/LED/CW	400	LED	1.85	5700	8.8

MOUNTING TYPE

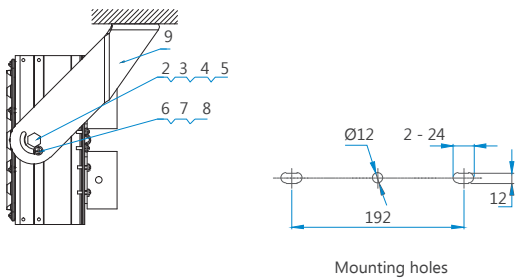
Seat mount

*all dimensions in mm



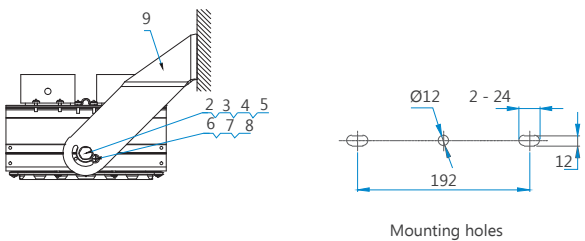
Accessories				
No.	Name	Spec.	Qty.	Remark
1	Expansion bolt (with nut, plain washer and spring washer)	M12	2	Provided by user
2	Hexagon head bolt	M10 × 30	2	Provided by manufacturer
3	Single coil spring lock washer, Normal type	10	4	
4	Plain washer	10	4	
5	Hexagon nut, style I	M10	2	
6	Single coil spring lock washer, Normal type	6	2	
7	Plain washer	6	2	
8	Pan head screw with cross recess	M16 × 16	2	Should be ordered separately
9	Mounting bracket		1	
10	Fall prevention chain assembly		1	
11	T-connector assembly		1	

Ceiling mount



Accessories				
No.	Name	Spec.	Qty.	Remark
1	Expansion bolt (with nut, plain washer and spring washer)	M12	2	Provided by user
2	Hexagon head bolt	M10 × 30	2	Provided by manufacturer
3	Single coil spring lock washer, Normal type	10	4	
4	Plain washer	10	4	
5	Hexagon nut, style I	M10	2	
6	Single coil spring lock washer, Normal type	6	2	
7	Plain washer	6	2	
8	Pan head screw with cross recess	M16 × 16	2	Should be ordered separately
9	Mounting bracket		1	
10	Fall prevention chain assembly		1	
11	T-connector assembly		1	

Wall mount



Accessories				
No.	Name	Spec.	Qty.	Remark
1	Expansion bolt (with nut, plain washer and spring washer)	M12	2	Provided by user
2	Hexagon head bolt	M10 × 30	2	Provided by manufacturer
3	Single coil spring lock washer, Normal type	10	4	
4	Plain washer	10	4	
5	Hexagon nut, style I	M10	2	
6	Single coil spring lock washer, Normal type	6	2	
7	Plain washer	6	2	
8	Pan head screw with cross recess	M16 × 16	2	Should be ordered separately
9	Mounting bracket		1	
10	Fall prevention chain assembly		1	
11	T-connector assembly		1	

SPARE PARTS

Name	Ordering code	Weight (kg)
LED driver - 0 V- 10 V	1311010578	0.75
LED driver - DALI	1305020130	0.88
LED driver - DMX	1305010142	0.92